

Coming Events

PROGRAM INFO

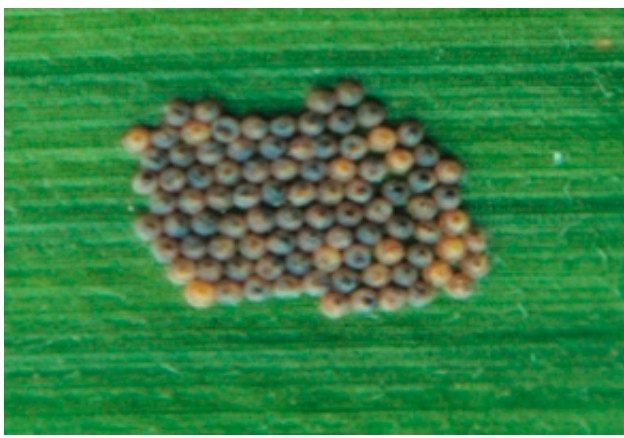
THE NRCS HAS ALLOCATED ALL AVAILABLE FEDERAL FUNDS FROM THE 2016 FISCAL YEAR EQIP BUDGET.

THE CENTRAL PLATTE NRD WILL BE RECEIVING A NEW ALLOCATION OF NSWCP MONEY DURING THE MONTH OF JULY. PRODUCERS INTERESTED IN ASSISTANCE SHOULD CONTACT THEIR LOCAL NRCS OFFICE.

CALENDAR OF EVENTS

JULY 28TH BOARD OF DIRECTORS MEETING
THURSDAY 2:00 PM @ CENTRAL PLATTE NRD OFFICE

WESTERN BEAN CUTWORM EGG MASS



JAPANESE BEETLE FEEDING ON SOYBEANS



Across the NRD

Stage of Growth

Currently the corn crop is 3 leaves from tasseling. Across the Central Platte NRD there are fields where the tassels have already emerged. The soybean crop is in the flowering growth stage or at full bloom.

Crop Condition

As some of the crops near the reproductive stages, this is a very critical point in the season to monitor soil moisture and properly manage insects and diseases. In the corn crop Western Bean Cutworm moths will be in flight and laying their egg over the next few weeks. Remember to scout for the egg masses while looking over your corn crop. As for the soybeans, continue monitoring the insects feeding on the foliage and for diseases that maybe starting to express themselves.

Irrigation

Information is from UNL Extension, NebGuide G1852 Irrigation Management for Corn.

Table I. Average crop water use (ET) by growth stage for 113-day maturity corn grown in South Central Nebraska.

Growth stage	Average water use rate (in/day)	Duration ¹ (days)	Water needed to reach stage (inches)	Water needed cumulative (inches)
Emergence (VE)	0.08	0-10	0.8	0.8
4-leaf (V4)	0.10	11-29	1.8	2.6
8-leaf (V8)	0.18	30-46	2.9	5.5
12-leaf (V12)	0.26	47-55	1.8	7.3
Early tassel (R1)	0.32	56-68	3.8	11.1
Silking (R2)	0.32	69-81	3.8	14.9
Blister Kernel (R3)	0.32	82-88	1.9	16.8
Beginning Dent (R4.7)	0.24	89-104	3.8	20.7
Full Dent (R5.5)	0.20	105-125	3.8	24.5
Maturity (R6)	0.10	126-140	1.4	25.9

¹Long-term average number of days since planting required to progress from the previous growth stage to the next. For example, to go from the blister kernel stage to the beginning dent stage requires approximately 15 days (day 89 to day104). Days to each growth stage were determined using the Hybrid-Maize Corn Growth Model for the period 1982-2005 at Clay Center, Neb.

Rainfall

Rainfall received at the Grand Island Field Office since my last report; on June 29th .12 inches, July 2nd .90 inches, and on July 5th we received .50 inches of moisture.

USDA Is An Equal Opportunity Provider and Employer.

The following information is provided for Corn emergence dates listed:

Corn emergence during: May 5th to May 15th

Water used in the last 2 weeks	2.27 inches
Projected daily water use	.26 inches

Corn emergence during: May 16th to May 26th

Water used in the last 2 weeks	2.02 inches
Projected daily water use	.24 inches

The following information is provided for Soybean emergence dates listed:

Soybean emergence during: May 16th to May 26th

Water used in the last 2 weeks	2.19 inches
Projected daily water use	.24 inches

Soybean emergence during: May 27th to June 6th

Water used in the last 2 weeks	1.64 inches
Projected daily water use	.20 inches

The following information is provided for Irr. Grass emergence: April 15th

Water used in the last 2 weeks	1.87 inches
Projected daily water use	.18 inches

Additional ET Information Sites:

UNL CropWatch <http://cropwatch.unl.edu/>

Central Platte NRD Webpage: www.cpnrd.org/