

## Coming Events

### PROGRAM INFO

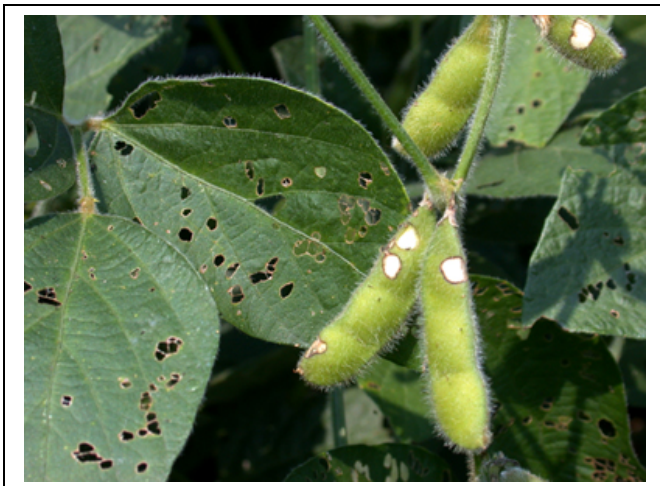
THE NRCS HAS ALLOCATED ALL AVAILABLE FEDERAL FUNDS FROM THE 2016 FISCAL YEAR EQIP BUDGET.

THE CENTRAL PLATTE NRD HAS RECEIVED A NEW ALLOCATION OF NSWCP MONEY AT THE END OF JULY. PRODUCERS INTERESTED IN ASSISTANCE SHOULD CONTACT THEIR LOCAL NRCS OFFICE.

### CALENDAR OF EVENTS

SEPTEMBER 1<sup>ST</sup> BOARD OF DIRECTORS MEETING  
FOR THE MONTH OF AUGUST  
THURSDAY 2:00 PM @ CENTRAL PLATTE NRD OFFICE

### **BEAN LEAF BEETLE FOLIAR & POD DAMAGE**



### **SOYBEAN SEED DEVELOPMENT STAGES**



## Across the NRD

### **Stage of Growth**

The corn crop continues to progress nicely, it has advanced to the late dough stage, and is showing strong signs of early dent. The soybean crop continues to move through the pod fill growth stage. As it continues to develop, they are moving very near full pod.

### **Crop Condition**

As you continue to scout your corn crop, the primary focus is starting to shift from insects to monitoring diseases. For the most part across the NRD I don't think we have had any large disease issues, thus far. That can change quickly if conditions are right for a given disease, so stay on your toes. As for the soybeans, now is the time to start watching for Bean Leaf Beetles. Their numbers usually start to increase from mid-August to early September. Adult beetles will feed on both the foliage and the succulent pods, especially the pods in the upper canopy. Once the foliage begins drying down in late August or September pod feeding may intensify, pods become more desirable than the discolored foliage.

### **Irrigation**

<b>Growth Stage</b>	<b>Approx. Days To Maturity</b>	<b>Water Use To Maturity</b>
<b>Dough</b>	34	7.5"
<b>Beginning Dent</b>	24	5.0"
<b>Full Dent</b>	13	2.5"
<b>Physiological Maturity</b>	0	0.0"
<b>Beginning Pod Fill</b>	29	6.5"
<b>Full Seed</b>	17	3.5"
<b>Beginning Maturity</b>	0	0.0"

### **Rainfall**

Rainfall received at the Grand Island Field Office since my last report; nothing to report at this time.

*The following information is provided for Corn emergence dates listed:*

Corn emergence during: May 5<sup>th</sup> to May 15<sup>th</sup>

Water used in the last week 1.28 inches

Projected daily water use .20 inches

Corn emergence during: May 16<sup>th</sup> to May 26<sup>th</sup>

Water used in the last week 1.28 inches

Projected daily water use .20 inches

*The following information is provided for Soybean emergence dates listed:*

Soybean emergence during: May 16<sup>th</sup> to May 26<sup>th</sup>

Water used in the last week 1.13 inches

Projected daily water use .15 inches

Soybean emergence during: May 27<sup>th</sup> to June 6<sup>th</sup>

Water used in the last week 1.27 inches

Projected daily water use .19 inches

*The following information is provided for Irr. Grass emergence: April 15<sup>th</sup>*

Water used in the last week .63 inches

Projected daily water use .10 inches

Additional ET Information Sites:

UNL CropWatch <http://cropwatch.unl.edu/>

Central Platte NRD Webpage: [www.cpnrd.org/](http://www.cpnrd.org/)