

Coming Events

PROGRAM INFO

THE NRCS HAS ALLOCATED ALL AVAILABLE FEDERAL FUNDS FROM THE 2016 FISCAL YEAR EQIP BUDGET.

THE CENTRAL PLATTE NRD HAS RECEIVED A NEW ALLOCATION OF NSWCP MONEY AT THE END OF JULY. PRODUCERS INTERESTED IN ASSISTANCE SHOULD CONTACT THEIR LOCAL NRCS OFFICE.

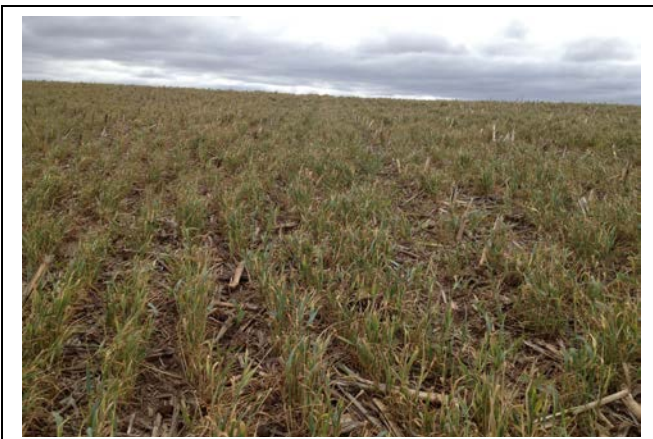
CALENDAR OF EVENTS

SEPTEMBER 1ST BOARD OF DIRECTORS MEETING
FOR THE MONTH OF AUGUST
THURSDAY 2:00 PM @ CENTRAL PLATTE NRD OFFICE

SCHEDULING YOUR LAST IRRIGATION



COVER CROPS BUILDING SOIL HEALTH



Across the NRD

Stage of Growth

The corn has reached mid dent, and the 2016 growing season is nearing its end. The soybeans have completed full seed, so the yellowing of the leaves and then the pods should be following shortly.

Crop Condition

We have reached the point in the growing season that producers should be preparing for their last irrigation(s), unless they already received enough rain to finish their crop. When scheduling this irrigation they should be utilizing all 4 feet of their soil moisture profile. Once the moisture profile has been evaluated they will be prepared to make their last application(s) for the year. This irrigation practice will help save water and reduce pumping costs. Something else to start thinking about is establishing cover crops for future fall and winter months. If you're interested, please stop into your local NRCS Office to discuss this conservation practice in more detail. Cover crops will help you capture, recycle, redistribute nutrients, reduce soil compaction, increase soil organic matter, and provide supplemental grazing. By having something green and growing for as much of the year as possible, you will feed the microorganisms and ultimately improve your soil health.

Irrigation

Growth Stage	Approx. Days to Maturity	Water Use to Maturity
Beginning Dent	24	5.0"
Full Dent	13	2.5"
Physiological Maturity	0	0.0"
Full Seed	17	3.5"
Beginning Maturity	0	0.0"

Rainfall

Rainfall received at the Grand Island Field Office since my last report; on August 19th .20 inches of moisture.

USDA Is An Equal Opportunity Provider and Employer.

The following information is provided for Corn emergence dates listed:

Corn emergence during: May 5th to May 15th

Water used in the last week 1.26 inches

Projected daily water use .14 inches

Corn emergence during: May 16th to May 26th

Water used in the last week 1.48 inches

Projected daily water use .16 inches

The following information is provided for Soybean emergence dates listed:

Soybean emergence during: May 16th to May 26th

Water used in the last week .42 inches

Projected daily water use .03 inches

Soybean emergence during: May 27th to June 6th

Water used in the last week 1.23 inches

Projected daily water use .14 inches

The following information is provided for Irr. Grass emergence: April 15th

Water used in the last week .66 inches

Projected daily water use .07 inches

Additional ET Information Sites:

UNL CropWatch <http://cropwatch.unl.edu/>

Central Platte NRD Webpage: www.cpnrd.org/