

Coming Events

PROGRAM INFO

THE NRCS WILL BE ALLOCATING ADDITIONAL AVAILABLE FEDERAL FUNDS THIS SUMMER FOR THE 2015 EQIP SIGNUP.

THE CENTRAL PLATTE NRD HAS RECEIVED AND ALLOCATED THE NEW NSWCP MONEY DURING THE JULY BOARD MEETING. PRODUCERS STILL INTERESTED IN ASSISTANCE SHOULD CONTACT THEIR LOCAL NRCS OFFICE.

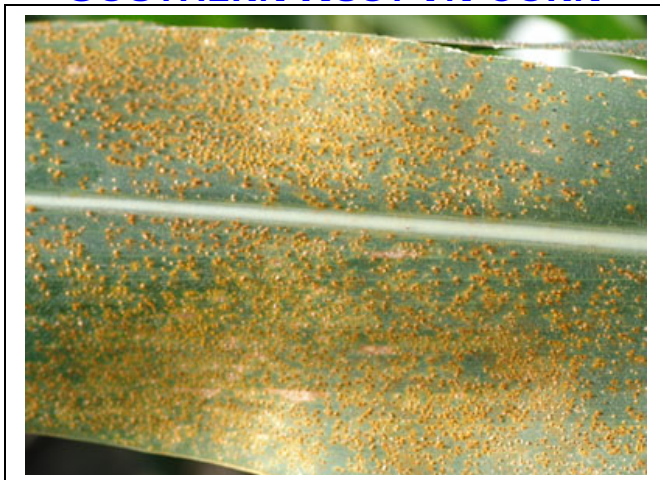
CALENDAR OF EVENTS

SEPTEMBER 3RD BOARD OF DIRECTORS MEETING FOR AUGUST
THURSDAY 2:00 PM @ CENTRAL PLATTE NRD OFFICE

GRAY LEAF SPOT IN CORN



SOUTHERN RUST IN CORN



Across the NRD

Stage of Growth

Corn has reached the dough growth stage. This means the shelled cob is a light red to pink color. The soybean plants are at the beginning seed growth stage. This is characterized by rapid seed growth.

Crop Condition

The UNL Extension has confirmed in numerous counties in eastern and south central Nebraska some diseases of concern. Southern Rust, Gray Leaf Spot, and Northern Corn Leaf Blight can all be a concern depending on your location. The weather conditions earlier in the growing season, and our current conditions with the high humidity are ideal for the diseases. During these conditions the disease tends to spread and increase very rapidly. It will be important to scout your fields on a regular basis. If needed, fungicides can be very effective in suppressing the development of these diseases. Timing is critical to maximize effectiveness when applying fungicides to the plant leaves to help prevent retreatment.

Irrigation

Growth Stage	Approx. Days to Maturity	Water Use to Maturity
Dough	34	7.5"
Beginning Dent	24	5.0"
Full Dent	13	2.5"
Physiological Maturity	0	0.0"
Beginning Pod Fill	29	6.5"
Full Seed	17	3.5"
Beginning Maturity	0	0.0"

Rainfall

Rainfall received at the Grand Island Field Office since my last report; on July 31st we received .89 inches of moisture.

USDA Is An Equal Opportunity Provider and Employer.

The following information is provided for Corn emergence dates listed:

Corn emergence during: May 5th to May 15th

Water used in the last week 1.51 inches

Projected daily water use .21 inches

Corn emergence during: May 16th to May 26th

Water used in the last week 1.51 inches

Projected daily water use .21 inches

The following information is provided for Soybean emergence dates listed:

Soybean emergence during: May 16th to May 26th

Water used in the last week 1.51 inches

Projected daily water use .21 inches

Soybean emergence during: May 27th to June 6th

Water used in the last week 1.51 inches

Projected daily water use .21 inches

The following information is provided for Irrigated Grass emergence during: April 15th

Water used in the last week .81 inches

Projected daily water use .10 inches

Additional ET Information Sites:

KRVN radio broadcasts

KRVN.COM

UNL CropWatch <http://cropwatch.unl.edu/>

Central Platte NRD Webpage: www.cpnrd.org/