

## Coming Events

### PROGRAM INFO

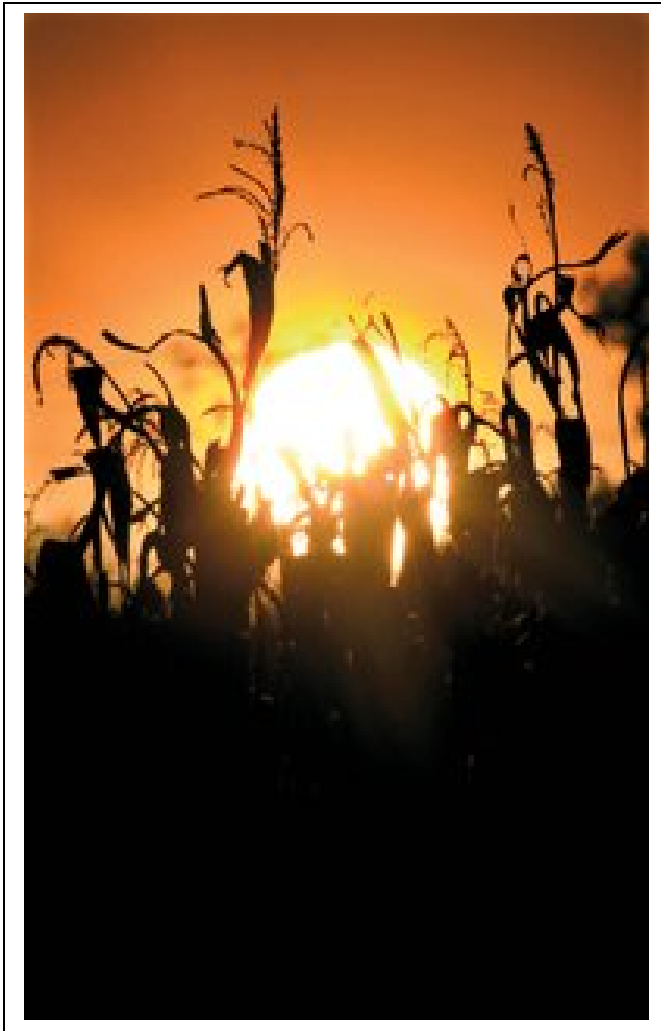
THE NRCS HAS ALLOCATED ALL AVAILABLE FEDERAL FUNDS FROM THE 2016 FISCAL YEAR EQIP BUDGET.

THE CENTRAL PLATTE NRD HAS RECEIVED A NEW ALLOCATION OF NSWCP MONEY AT THE END OF JULY. PRODUCERS INTERESTED IN ASSISTANCE SHOULD CONTACT THEIR LOCAL NRCS OFFICE.

### CALENDAR OF EVENTS

SEPTEMBER 22<sup>ND</sup> BOARD OF DIRECTORS MEETING  
THURSDAY 2:00 PM @ CENTRAL PLATTE NRD OFFICE

## ENJOY YOUR FALL HARVEST



## Across the NRD

### Stage of Growth

The crops are near, or some maybe just reaching the physiological maturity growth stage. Regardless of their exact growth stage, the soil moisture profile in most locations should be full enough to finish the corn, and maybe the soybeans for this year.

### Crop Condition

This will be the last newsletter of the irrigation season. It appears for the most part, it has been another good season for the crops in 2016. We would like to wish all of you a safe harvest. *I would also like to remind everyone to turn in your irrigation records as soon as you're done irrigating. That way it will be taken care of before the start of harvest. As a reminder the deadline for turning in records is November 4<sup>th</sup>.* As in the past, you will need to take your **completed irrigation records which include: graph printouts, flow meter readings, and rainfall** or your agronomist report form to your local NRCS field office. **This is a requirement for those who have received cost share to install an irrigation practice in the past few years.** If you have any questions please give your local NRCS field office a call or stop in.

### Irrigation

Growth Stage	Approx. Days to Maturity	Water Use to Maturity
Beginning Dent	24	5.0"
Full Dent	13	2.5"
Physiological Maturity	0	0.0"
Full Seed	17	3.5"
Beginning Maturity	0	0.0"

### Rainfall

Rainfall received at the Grand Island Field Office since my last report, nothing to reports at this time. Total rainfall recorded at the Grand Island Field Office from May 8<sup>th</sup> to present was 10.10 inches.

**USDA Is An Equal Opportunity Provider and Employer.**

*The following information is provided for Corn emergence dates listed:*

Corn emergence during: May 5<sup>th</sup> to May 15<sup>th</sup>

Water used in the last week .48 inches

Projected daily water use .05 inches

Corn emergence during: May 16<sup>th</sup> to May 26<sup>th</sup>

Water used in the last week .72 inches

Projected daily water use .08 inches

*The following information is provided for Soybean emergence dates listed:*

Soybean emergence during: May 16<sup>th</sup> to May 26<sup>th</sup>

Water used in the last week .14 inches

Projected daily water use .01 inches

Soybean emergence during: May 27<sup>th</sup> to June 6<sup>th</sup>

Water used in the last week .39 inches

Projected daily water use .04 inches

*The following information is provided for Irr. Grass emergence: April 15<sup>th</sup>*

Water used in the last week .40 inches

Projected daily water use .07 inches

Additional ET Information Sites:

UNL CropWatch <http://cropwatch.unl.edu/>

Central Platte NRD Webpage: [www.cpnrd.org/](http://www.cpnrd.org/)