

Coming Events

PROGRAM INFO

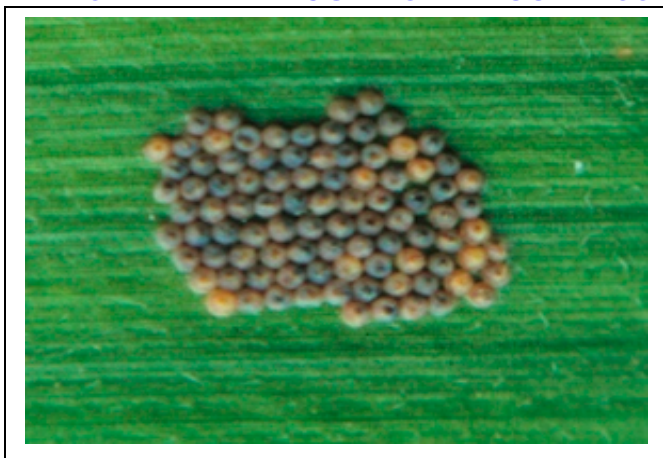
THE NRCS WILL BE ALLOCATING ADDITIONAL AVAILABLE FEDERAL FUNDS THIS SUMMER FOR THE 2015 EQIP SIGNUP.

THE CENTRAL PLATTE NRD WILL BE RECEIVING A NEW ALLOCATION OF NSWCP MONEY DURING THE MONTH OF JULY. PRODUCERS INTERESTED IN ASSISTANCE SHOULD CONTACT THEIR LOCAL NRCS OFFICE.

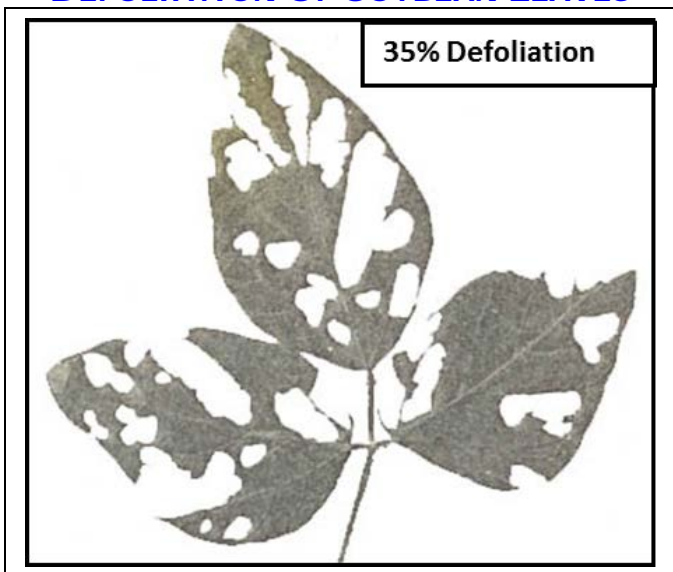
CALENDAR OF EVENTS

JULY 23RD BOARD OF DIRECTORS MEETING
THURSDAY 2:00 PM @ CENTRAL PLATTE NRD OFFICE

WESTERN BEAN CUTWORM EGG MASS



DEFOLIATION OF SOYBEAN LEAVES



Across the NRD

Stage of Growth

The crops growth stages vary this year, but a good majority of the corn crop is 3 leaves from tassel. The soybeans have reached the flowering growth stage.

Crop Condition

As some of the crops near the reproductive stages, this is a very critical point in the season to monitor soil moisture and properly manage insects and diseases. In the corn crop Western Bean Cutworm moths will be in flight and laying their egg over the next few weeks. Scouting for the egg masses is recommended at this time. In the soybeans, start monitoring the insect feeding on the foliage and the diseases that are starting to express themselves. Defoliation at this growth stage would have to exceed 30% to meet UNL's thresholds for treatment.

Irrigation

Information is from UNL Extension, NebGuide G1852 Irrigation Management for Corn.

Table I. Average crop water use (ET) by growth stage for 113-day maturity corn grown in South Central Nebraska.

Growth stage	Average water use rate (in/day)	Duration ¹ (days)	Water needed to reach stage (inches)	Water needed cumulative (inches)
Emergence (VE)	0.08	0-10	0.8	0.8
4-leaf (V4)	0.10	11-29	1.8	2.6
8-leaf (V8)	0.18	30-46	2.9	5.5
12-leaf (V12)	0.26	47-55	1.8	7.3
Early tassel (R1)	0.32	56-68	3.8	11.1
Silking (R2)	0.32	69-81	3.8	14.9
Blister Kernel (R3)	0.32	82-88	1.9	16.8
Beginning Dent (R4.7)	0.24	89-104	3.8	20.7
Full Dent (R5.5)	0.20	105-125	3.8	24.5
Maturity (R6)	0.10	126-140	1.4	25.9

¹Long-term average number of days since planting required to progress from the previous growth stage to the next. For example, to go from the blister kernel stage to the beginning dent stage requires approximately 15 days (day 89 to day 104). Days to each growth stage were determined using the Hybrid-Maize Corn Growth Model for the period 1982-2005 at Clay Center, Neb.

Rainfall

Rainfall received at the Grand Island Field Office since my last report; on July 6th we received .39 inches of moisture.

USDA Is An Equal Opportunity Provider and Employer.

The following information is provided for Corn emergence dates listed:

Corn emergence during: May 5th to May 15th

Water used in the last 2 weeks 2.85 inches

Projected daily water use .23 inches

Corn emergence during: May 16th to May 26th

Water used in the last 2 weeks 2.83 inches

Projected daily water use .22 inches

The following information is provided for Soybean emergence dates listed:

Soybean emergence during: May 16th to May 26th

Water used in the last 2 weeks 2.74 inches

Projected daily water use .22 inches

Soybean emergence during: May 27th to June 6th

Water used in the last 2 weeks 2.17 inches

Projected daily water use .19 inches

The following information is provided for Irrigated Grass emergence during: April 15th

Water used in the last 2 weeks 2.61 inches

Projected daily water use .17 inches

Additional ET Information Sites:

KRVN radio broadcasts

KRVN.COM

UNL CropWatch <http://cropwatch.unl.edu/>

Central Platte NRD Webpage: www.cpnrd.org/